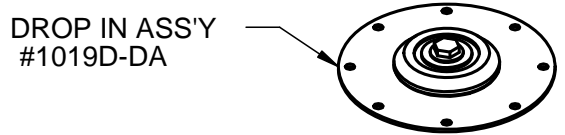


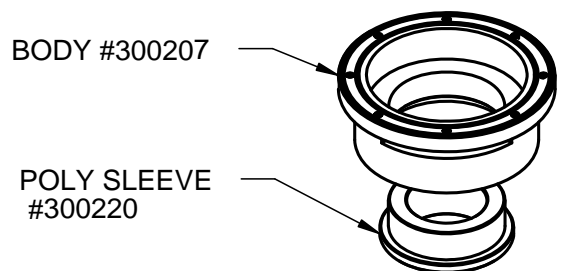
HEAD BOLTS
#300206BLT

HEAD #300206

SPRING 60lb
#1019D-9

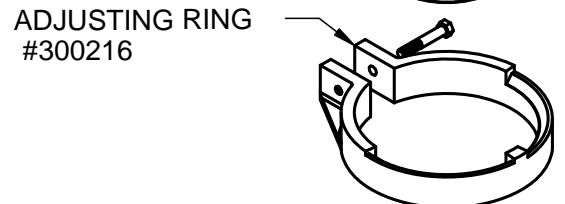


DROP IN ASS'Y
#1019D-DA

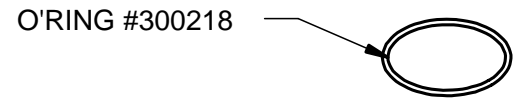


BODY #300207

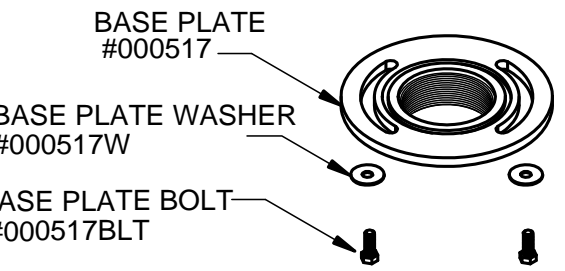
POLY SLEEVE
#300220



ADJUSTING RING
#300216



O'RING #300218



BASE PLATE
#000517

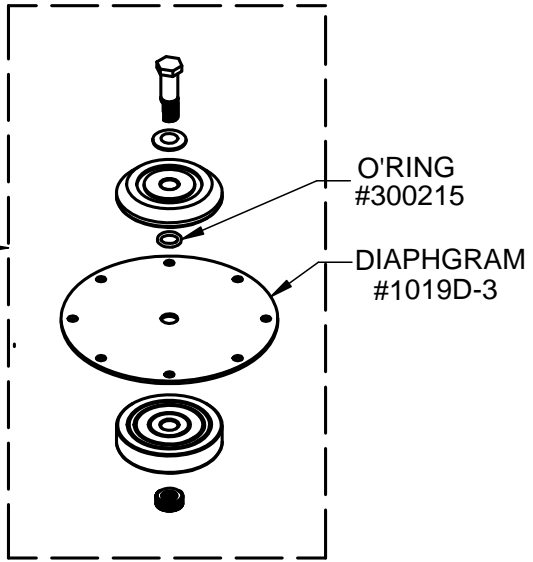
BASE PLATE WASHER
#000517W

BASE PLATE BOLT
#000517BLT

**RECONDITIONING KIT
#1019D-RK**
1 off 1019D-DA
1 off 300220
2 off 1019D-3

NOTES!!!

- 1 It is recommended that customers carry in their stock as spare parts a minimum of 1 only Reconditioning Kit #1019D-RK. Items in this kit can be damaged due to contamination taken in when the tank is filled with contaminated water.
- 2 DISMANTLING 1019D VALVE
 - 2.1 Unscrew all the Head Bolts #300206BLT in an even manner. It will be necessary to place your hand on the Head # 300206 towards the end of this process due to the effects of Spring # 1019D-9.
 - 2.2 Once opened, inspect all parts for wear and replace if necessary.
 - 2.3 It will be necessary to use a small press to push out the Poly Sleeve #300220 if it is damaged
 - 2.4 All parts required to overhaul the valve can be found in the Reconditioning Kit #1019D-RK
- 3 ASSEMBLING 1019D VALVE
 - 3.1 If necessary, using a small press, push the Poly Sleeve #300220 into the Body #300207
 - 3.2 Turn the Body #300207 over and place the Drop In Assy #1019-DA onto the Body #300207
 - 3.3 Place the spring #1019D-9 onto the Drop In Assembly.
 - 3.4 Place the Head #300206 over the spring. Place your hand on the head and gently push it down so that you can start the Head Bolts #300206BLT in the Head #300206.
 - 3.5 Tighten all the Head Bolts #300206BLT in an even manner using a cross pattern method
 - 3.6 Check the condition of the Oring #300218. Replace if necessary. Fit the assembled spray head to the Baseplate #000517 using the Base Plate Washers #000517W and Base Plate Bolts #000517BLT



O'RING
#300215

DIAPHRAGM
#1019D-3

CONFIDENTIAL
THIS DOCUMENT CONTAINS CONFIDENTIAL AND PROPRIETARY INFORMATION THAT IS THE PROPERTY OF MAGNUM AUSTRALIA MINEQUIPT PTY.LTD.
IT SHALL NOT BE USED OR REPRODUCED OR ITS CONTENTS DISCLOSED IN WHOLE OR PART WITHOUT THE EXPRESS WRITTEN CONSENT OF MAGNUM AUSTRALIA/MINEQUIPT PTY.LTD.

DRAWN TO AS 1100 SURFACE FINISH MATERIAL :

DRAWN	DATE	APPD.	EXCEPT WHERE NOTED ALL DIMENSIONS IN MILLIMETRES



**MAGNUM
AUSTRALIA**

35 PARKHURST DRIVE KNOXFIELD
VICTORIA 3180
PHONE 9801 8433 FAX 9800 3240

TOLERANCES UNLESS NOTED		SCALE	NTS	1019D SPRAY VALVE EXPLODED VIEW - PART NUMBERS	
WHOLE DIMENSIONS	±0.50	DRAWN	TH	SHEET 1 OF 4 SHEETS	DRG. No.
ONE DECIMAL PLACE	±0.25	DATE	26/7/04		
TWO DECIMAL PLACES	±0.10	CHECKED			
ANGLES	±30'	DATE			

