

HEAD BOLTS
#200206BLT

HEAD #200206

SPRING
#MMV/B-9

DROP IN ASS'Y
#MMV/B-DA

BODY #200207

ADJUSTING RING
#200216

PLUG
#40DP

CAMLOK
#40B

SOCKET
#40mm

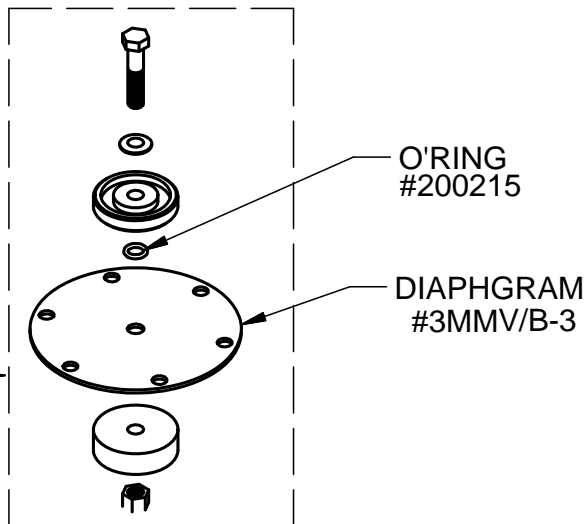
RECONDITIONING KIT
#MMV/B-RK
1 x MMV/B-DA
1 x MMV/B-9
2 x MMV/B-3

CONFIDENTIAL

THIS DOCUMENT CONTAINS CONFIDENTIAL AND PROPRIETARY INFORMATION THAT IS THE PROPERTY OF MAGNUM AUSTRALIA (MNEQUIPT PTY LTD). IT SHALL NOT BE USED OR REPRODUCED OR ITS CONTENTS DISCLOSED IN WHOLE OR PART WITHOUT THE EXPRESS WRITTEN CONSENT OF MAGNUM AUSTRALIA (MNEQUIPT PTY LTD).

NOTES!!!

- 1 It is recommended that customers carry in their stock as spare parts a minimum of 1 only Reconditioning Kit #MMV/B-RK. Items in this kit can be damaged due to contamination taken in when the tank is filled with contaminated water.
- 2 DISMANTLING MMV/B VALVE
 - 2.1 Unscrew all the Head Bolts #200206BLT in an even manner. It will be necessary to place your hand on the Head # 200206 towards the end of this process due to the effects of Spring # MMV/B-9.
 - 2.2 Once opened, inspect all parts for wear and replace if necessary.
 - 2.3 All parts need to overhaul the valve can be found in the Reconditioning Kit #MMV/B-RK
- 3 ASSEMBLING MMV/B VALVE
 - 3.1 Place the Drop In Assy #MMV/B-DA onto the Body #20027
 - 3.2 Place the spring #MMV/B-9 onto the Drop In Assembly.
 - 3.3 Place the Head #200206 over the spring. Place your hand on the head and gently push it down so that you can start the Head Bolts #200206BLT in the Head #200206.
 - 3.4 Tighten all the Head Bolts #200206BLT in an even manner using a cross pattern method



DRAWN TO AS 1100

SURFACE
FINISH

MATERIAL :

DRAWN	DATE	APPD.

EXCEPT WHERE NOTED
ALL DIMENSIONS
IN MILLIMETRES



**MAGNUM
AUSTRALIA**

35 PARKHURST DRIVE KNOXFIELD
VICTORIA 3180
PHONE 9801 8433 FAX 9800 3240

SHEET SIZE: A3

TOLERANCES UNLESS NOTED

WHOLE DIMENSIONS ±0.50
ONE DECIMAL PLACE ±0.25
TWO DECIMAL PLACES ±0.10
ANGLES ±30'

SCALE NTS

DRAWN
DATE
CHECKED
DATE

MMV/B SPRAY VALVE
EXPLODED VIEW - PART NUMBERS

SHEET 1 OF
1 SHEETS

DRG.
No.