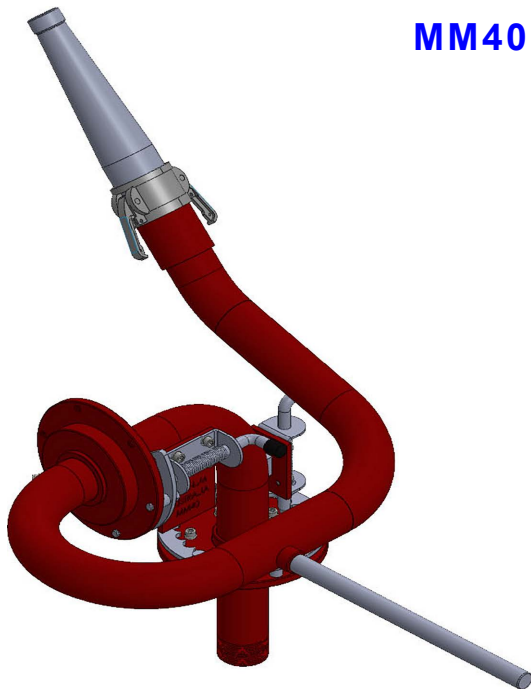
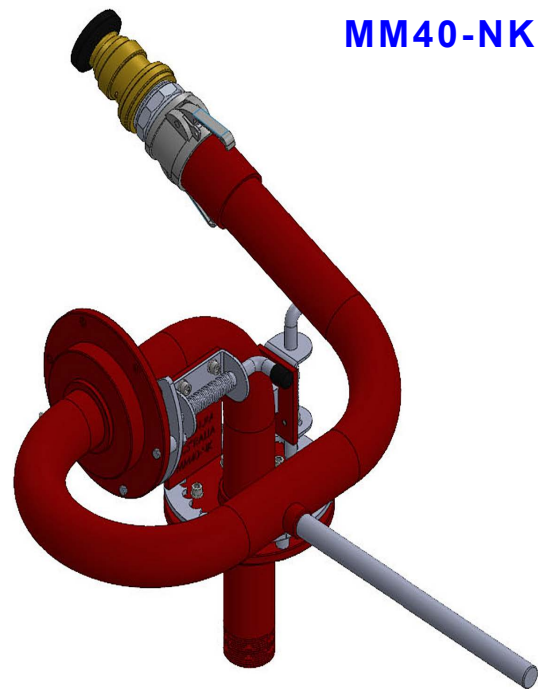




Water Cannon MM40 & MM40-NK- Manual

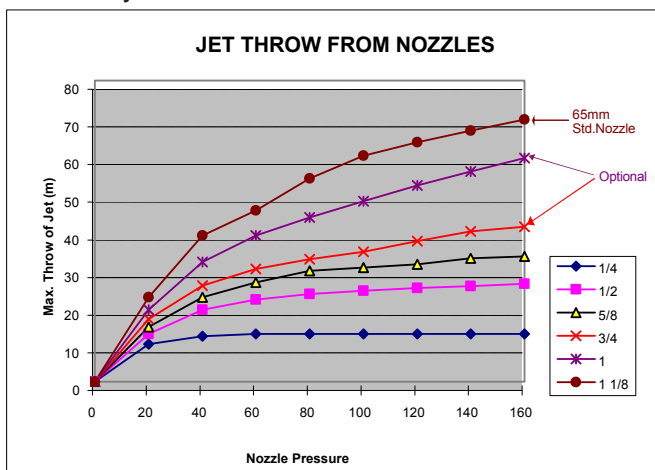
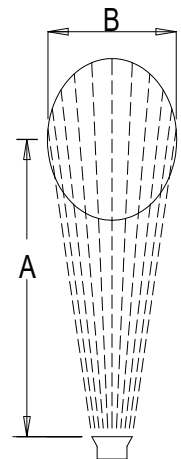


MM40



MM40-NK

- Easy installation
- Pressure tested to 3000 kPa
- 40mm (1 1/2") BSPT male inlet connection
- Engineered balanced and compact design
- Positive fixed positional swivel brake locking
- Designed for mobile or fixed mounted applications
- Patented "non-flog" Magnum® Australia swivel bearing
- Accepts Magnum Mini Valve (MMV/B for adjustable fan spray)
- Director nozzle supplied as standard; 16 mm (5/8") orifice and 30 m water throw at 7 bar
- All stainless steel fasteners and locking components
- 12 months product warranty
- Spare parts readily available
- Fully serviceable



FOGJET THROW SPECIFICATIONS

FJN40		THROW - Metres						
PRESSURE (Bar)	FLOW (L/min)	JET (m)	30° SPRAY		60° SPRAY		90° SPRAY	
			A	B	A	B	A	B
7	?	?	?	?	?	?	?	?
13	230	35	?	?	?	?	?	?



Water Cannon - Warning - Hazard to Health

Care needs to be taken operating a water cannon. Water from a cannon is capable of inflicting serious injury to a person in the path of the jet.

Primary injuries would be those from the direct hit to the body by the impact of the jet. These would include bruising of internal organs and damage to the eyes.

Secondary injuries can occur as a result of the acceleration of the body in collision with hard surfaces. These injuries would be largely skeletal, such as broken bone. Other injuries could be caused by debris, accelerated by the force of the water jet striking the person.

The following should be considered as a minimum level of care required when operating a water cannon:

- Know the direction that the cannon is aiming at. Aim the cannon in a safe direction before turning the water on.
- Keep all personal out of the front of the cannon. Dangerous flow velocities can cause serious injury for quite a distance in front of the cannon.
- The cannon contain moving parts. Keep hands, fingers, and objects away from pinch points when working close to the cannon.
- Do not attempt to modify the equipment in any way. Modifications of the equipment may result in damage and/or malfunction of the equipment which could cause injury to the operator or other. Also, the manufacturer's warranty will be void.
- Follow all the maintenance procedures in the documentation. Failure to do so, can result in damage and/or malfunction of the equipment which could cause injury to the operator or other.



Introduction

The MM40 or MM40-NK water cannons can throw water in a jet stream up to 35 m. The cannon is capable of a maximum flow rate of 470 L/min. It offers full 360° setting by manual means. The director nozzle is standard supply for the MM40 or MM40-NK. There is a fog-jet nozzle available for the MM40 or MM40-NK (part number FJ-40). It is also possible to fit a spray valve to the MM40 or MM40-NK.

Installation

The MM40 or MM40-NK water cannon is packed and shipped in a single box. The following items will be found when the box is opened:

1. 1 only assembled MM40 or MM40-NK water cannon complete with two swivel bearings, 1 1/2" BSPT male inlet connection and two only position locking mechanisms.
2. 1 only director nozzle 5/8" orifice.
3. 1 only 1-1/2" BSPP female socket and 1 1/" camlock to accept spray nozzles and valves.
4. 1 only threaded handle.

The water cannon is normally mounted and supported by the piping. Screw an isolating valve onto the outlet pipe and then screw the male 1 1/2" BSPT threaded end of the water cannon onto the outlet of the isolating valve. Screw the handle into position (the location point for the handle can be found between the 2 bearings). Screw the 1 1/2" socket onto to nozzle end of the cannon. Screw the 1 1/2" camlock into the socket and then snap lock the spray nozzle into the camlock head. The MM40 or MM40-NK water cannon is now ready to work.

Operation

Unlock the position locking mechanism and twist the water cannon into the required configuration. Lock the position locking mechanism once you are satisfied with the setting of the MM40 or MM40-NK configurations. The cannon is operated by opening the isolating valves if the system is up to pressure or by starting the water pump when the isolating valve is opened.



Maintenance schedule

Initial Service

1. The upper and lower bearings have been filled with Multi-Purpose EP Type Grease in the factory at the time of assembly. 4 pumps of grease from a grease gun should be sufficient if a new bearing has been installed.
2. Set the automatic lubrication canister supplied with the cannon to 12 months. This activates the lubricator.
3. Lubricate the rod ends (mounting for cylinders) using Multi-Purpose EP Type Grease. 1 pump of grease from a grease gun should be sufficient.
4. Check the operation of the water cannon; slew and elevation.

Quarterly Service

1. Check the condition of the swivel bearings by holding the pipe firmly and shaking it vigorously. There should be no play in the swivel bearing. Replace the seals and wear rings in the swivel bearings if there is any play.
2. Check the waster cannon for leaks. If there is a leak, it will occur at the swivel bearings. Replace the seals and wear rings in the swivel bearings if there is a leak on the water cannon.
3. Lubricate the rod ends (mounting for cylinders) using Multi-Purpose EP Type Grease. 1 pump of grease from a grease gun should be sufficient.
4. Check the operation of the water cannon; slew and elevation.

Annual Service

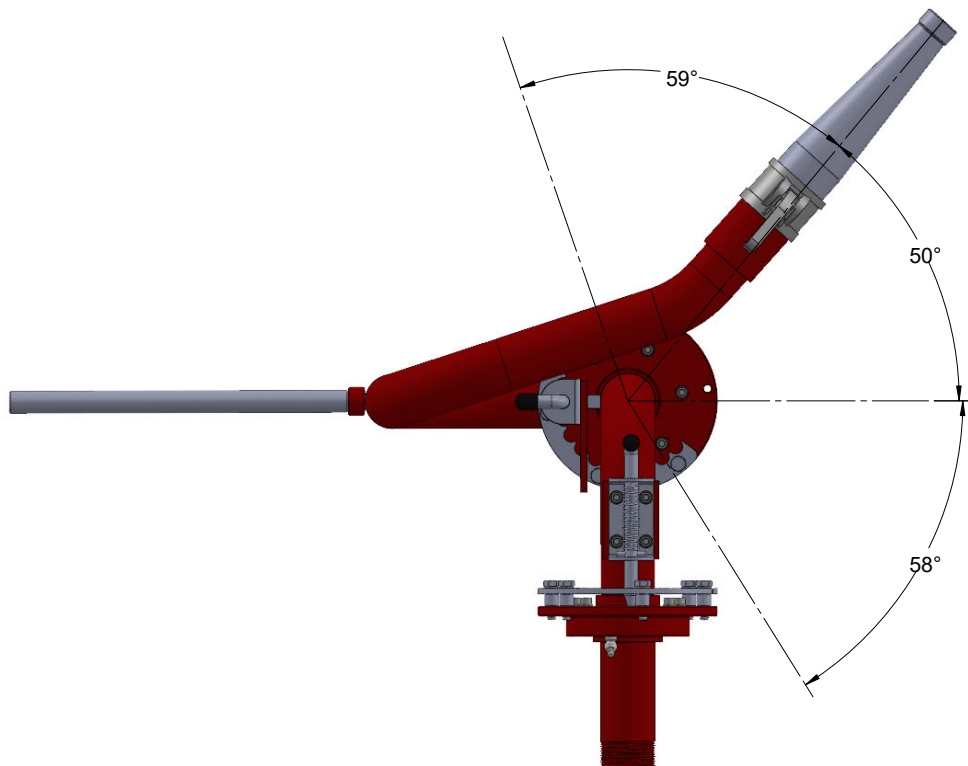
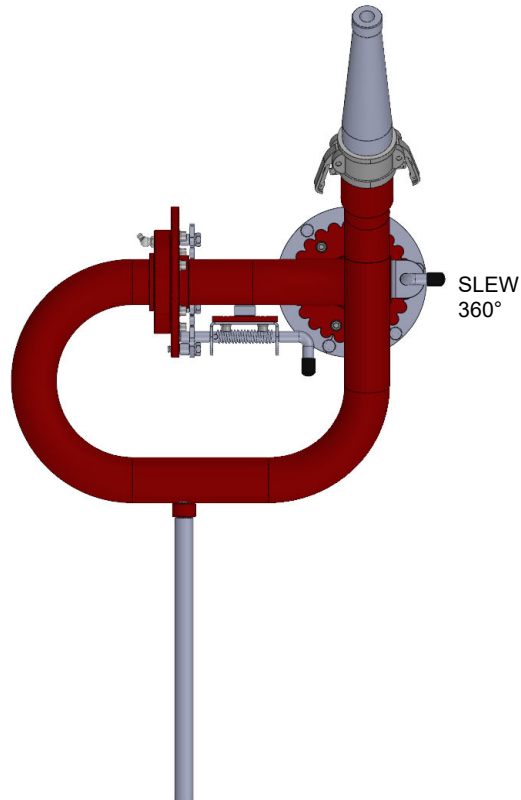
1. Strip and inspect the swivel bearing on the cannon. Replace the wear rings and the seals.
2. Install a new automatic lubrication canister as is indicated in quarterly service.



Configurations

There are two configurations for the MM40 water cannon:

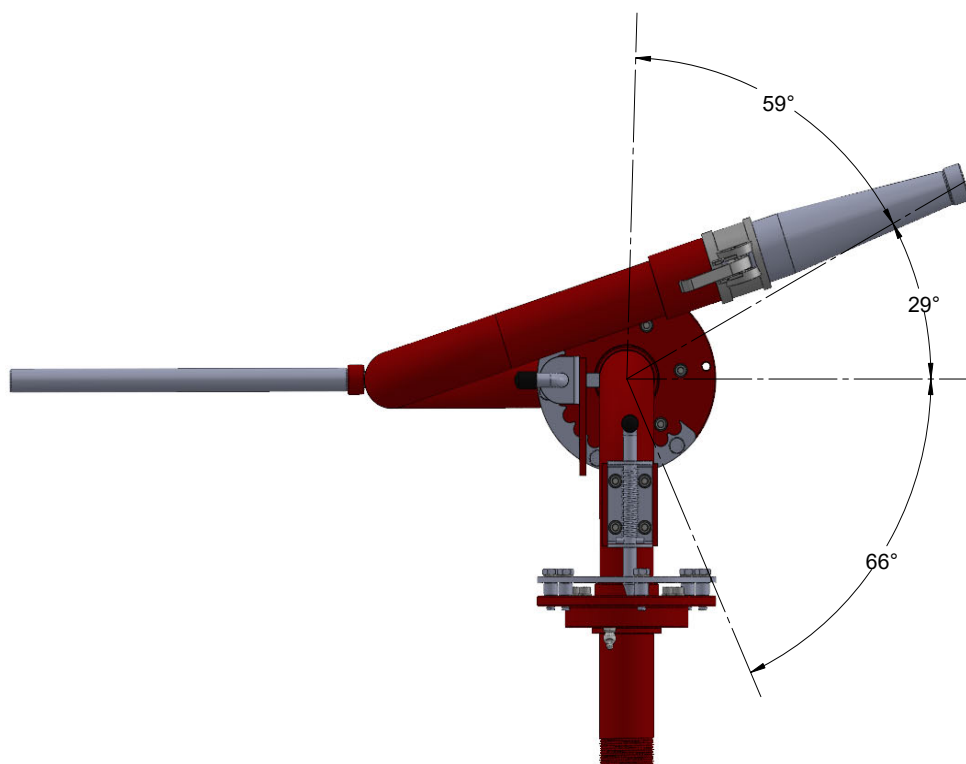
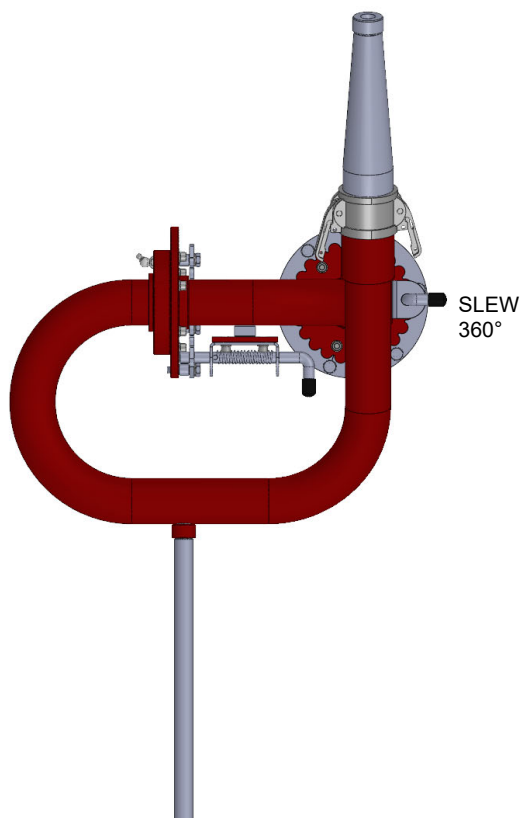
- MM40
The MM40 comes with a top sweep (item 22) which is connected to the camlock with a 45° angle.





Configurations

- MM40-NK (Non-Kick)
The MM40-NK comes with a top sweep (item 22) which is connected to the camlock without a 45° angle.



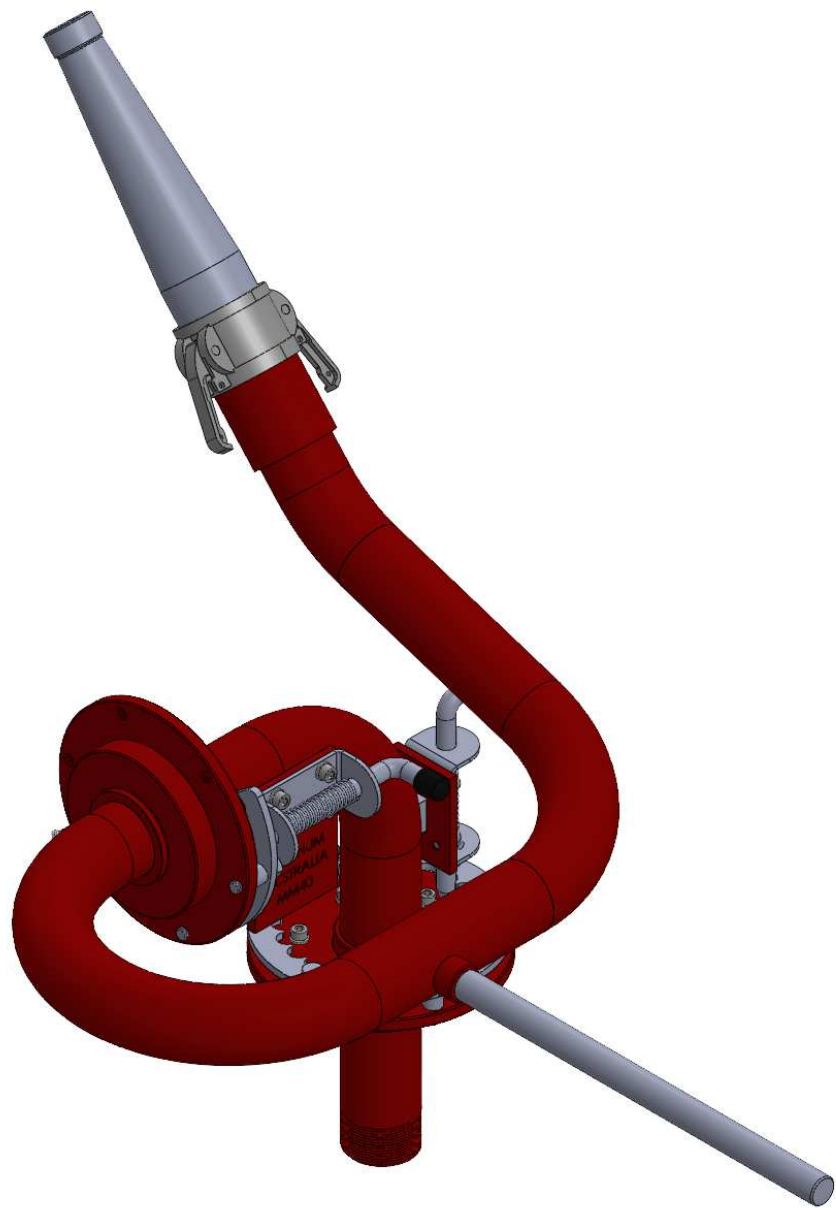



MAGNUM AUSTRALIA P/L

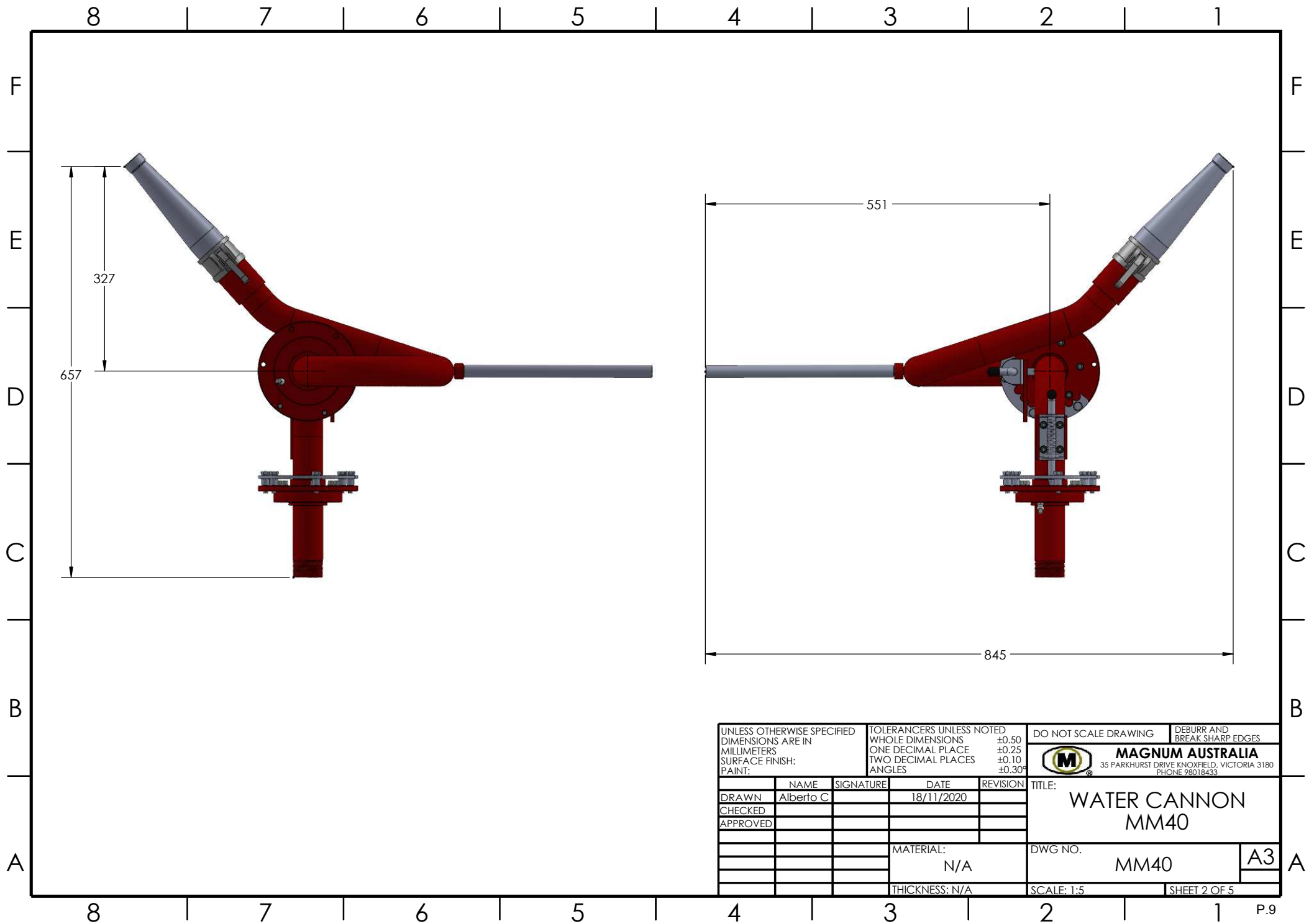
ABN: 66 134 090 243


Water Cannon

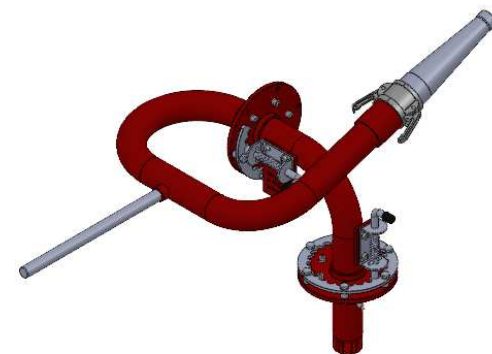
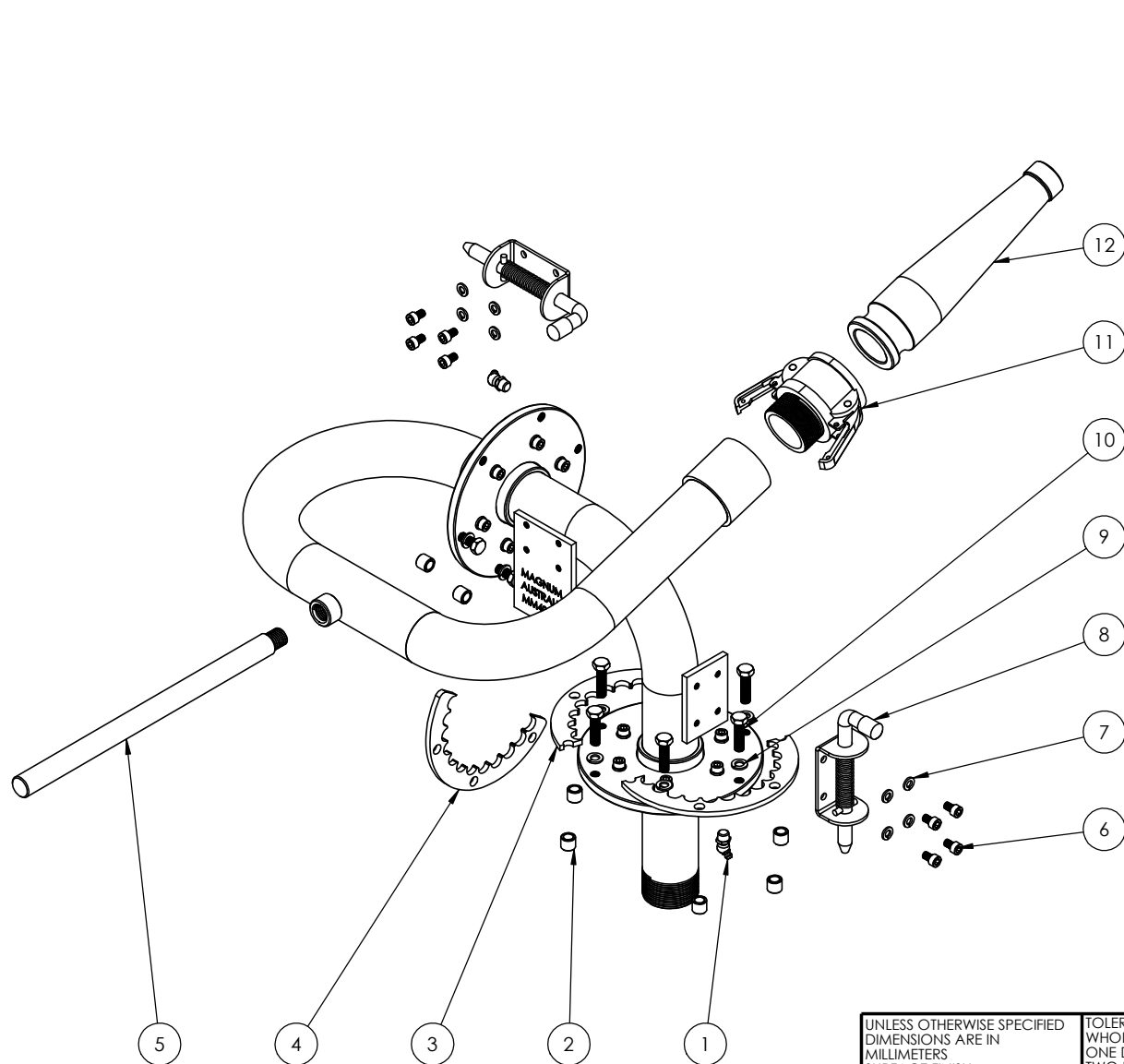
MM40




UNLESS OTHERWISE SPECIFIED DIMENSIONS ARE IN MILLIMETERS SURFACE FINISH: PAINT:		TOLERANCES UNLESS NOTED WHOLE DIMENSIONS ±0.50 ONE DECIMAL PLACE ±0.25 TWO DECIMAL PLACES ±0.10 ANGLES ±0.30°			DO NOT SCALE DRAWING		DEBURR AND BREAK SHARP EDGES	
					 MAGNUM AUSTRALIA 35 PARKHURST DRIVE KNOXFIELD, VICTORIA 3180 PHONE 98018433			
DRAWN	NAME Alberto C	SIGNATURE	DATE 18/11/2020	REVISION	TITLE: WATER CANNON MM40			
CHECKED								
APPROVED					DWG NO. MM40			
			MATERIAL: N/A		A3			
			THICKNESS: N/A		SCALE: 1:3			
					SHEET 1 OF 5			



UNLESS OTHERWISE SPECIFIED DIMENSIONS ARE IN MILLIMETERS SURFACE FINISH: PAINT:		TOLERANCES UNLESS NOTED WHOLE DIMENSIONS ±0.50 ONE DECIMAL PLACE ±0.25 TWO DECIMAL PLACES ±0.10 ANGLES ±0.30°		DO NOT SCALE DRAWING		DEBURR AND BREAK SHARP EDGES	
				 MAGNUM AUSTRALIA 35 PARKHURST DRIVE KNOXFIELD, VICTORIA 3180 PHONE 98018433			
TITLE:		WATER CANNON MM40					
DRAWN						NAME	
CHECKED						SIGNATURE	
APPROVED						DATE	
						REVISION	



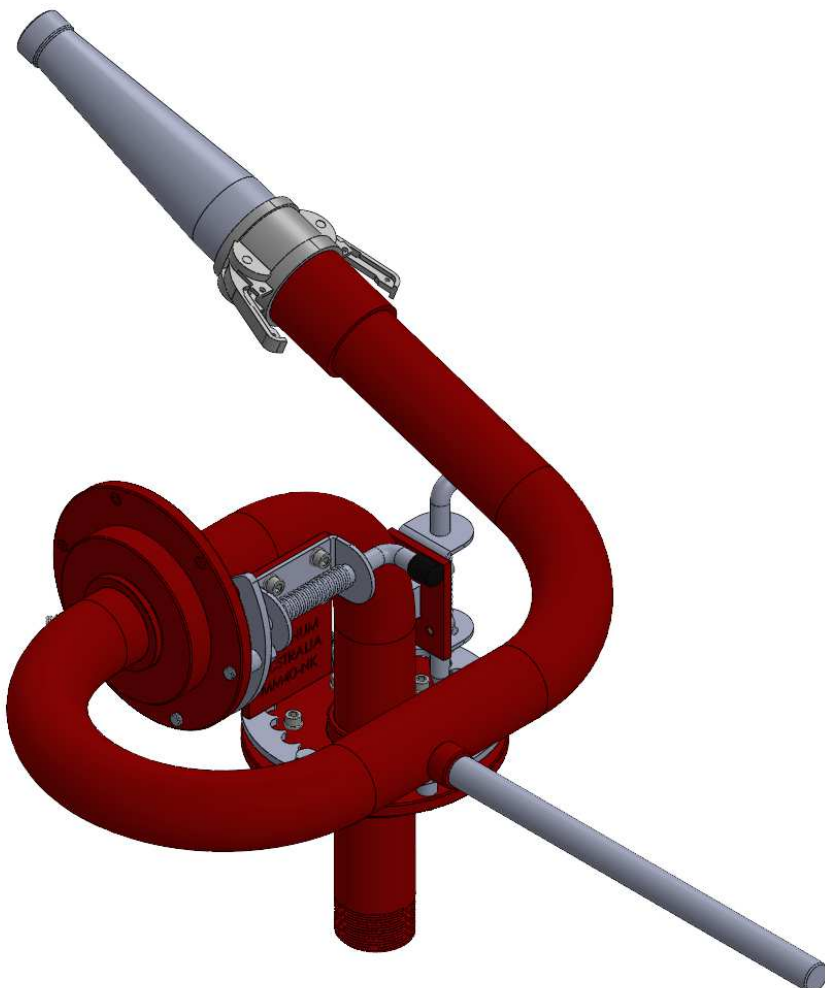
UNLESS OTHERWISE SPECIFIED DIMENSIONS ARE IN MILLIMETERS SURFACE FINISH: PAINT:			TOLERANCES UNLESS NOTED WHOLE DIMENSIONS ±0.50 ONE DECIMAL PLACE ±0.25 TWO DECIMAL PLACES ±0.10 ANGLES ±0.30°			DO NOT SCALE DRAWING			DEBURR AND BREAK SHARP EDGES			
									MAGNUM AUSTRALIA 35 PARKHURST DRIVE KNOXFIELD, VICTORIA 3180 PHONE 98018433			
						TITLE:						
DRAWN			Alberto C		19/11/2020		WATER CANNON MM40-NK			A3		
CHECKED			Rocky		19/11/2020							
APPROVED												
			MATERIAL:			DWG NO.						
			N/A			MM40-NK						
			THICKNESS: N/A			SCALE: 1:4			SHEET 3 OF 5			




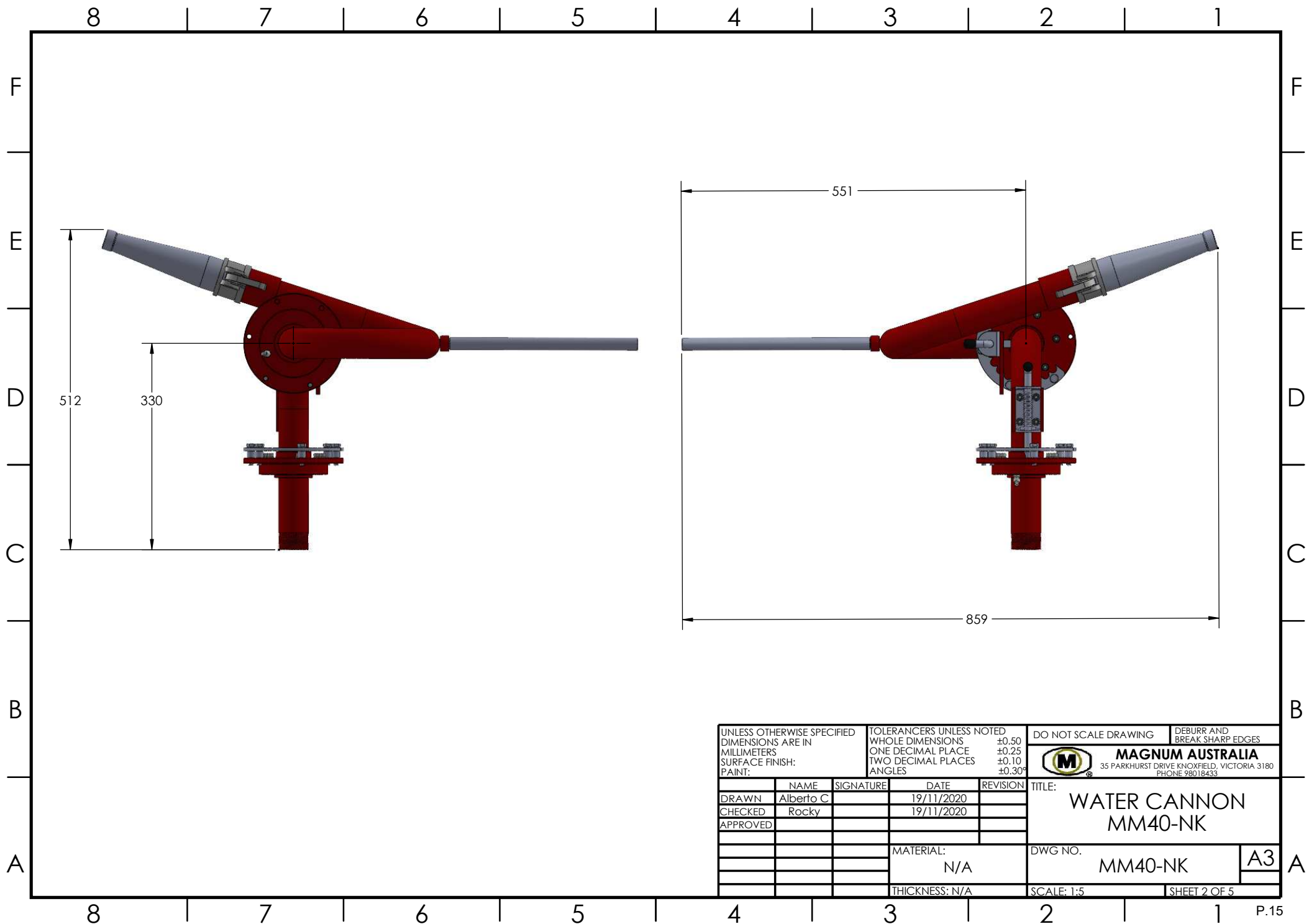
MAGNUM AUSTRALIA P/L


ABN: 66 134 090 243

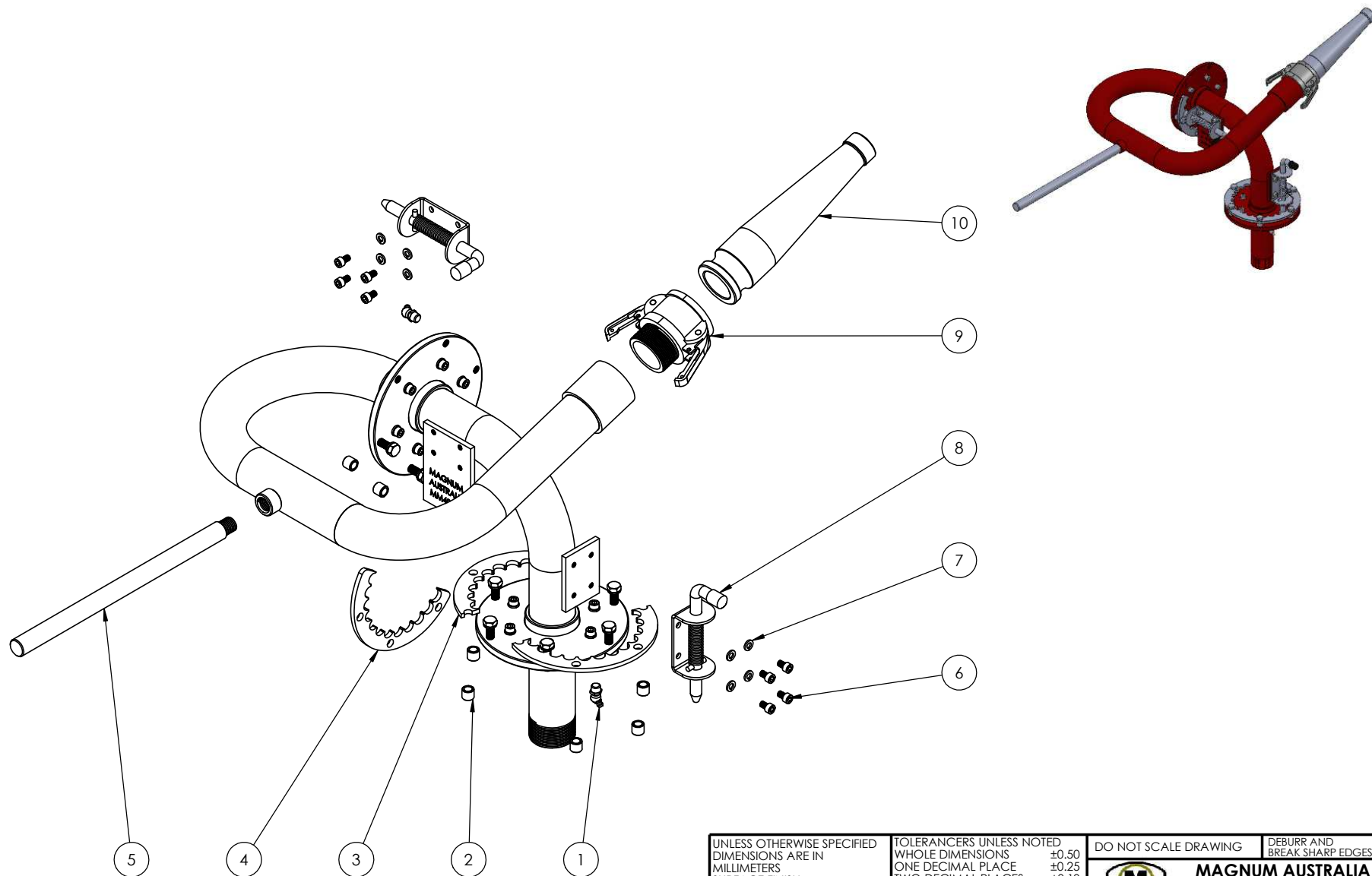
Water Cannon MM40-NK




UNLESS OTHERWISE SPECIFIED DIMENSIONS ARE IN MILLIMETERS SURFACE FINISH: PAINT:			TOLERANCES UNLESS NOTED WHOLE DIMENSIONS ±0.50 ONE DECIMAL PLACE ±0.25 TWO DECIMAL PLACES ±0.10 ANGLES ±0.30°		DO NOT SCALE DRAWING	DEBURR AND BREAK SHARP EDGES
					 MAGNUM AUSTRALIA 35 PARKHURST DRIVE KNOXFIELD, VICTORIA 3180 PHONE 98018433	
	NAME	SIGNATURE	DATE	REVISION	TITLE: WATER CANNON MM40-NK	
DRAWN	Alberto C		19/11/2020			
CHECKED						
APPROVED						
					DWG NO. MM40-NK	
					SCALE: 1:3	
					SHEET 1 OF 5	

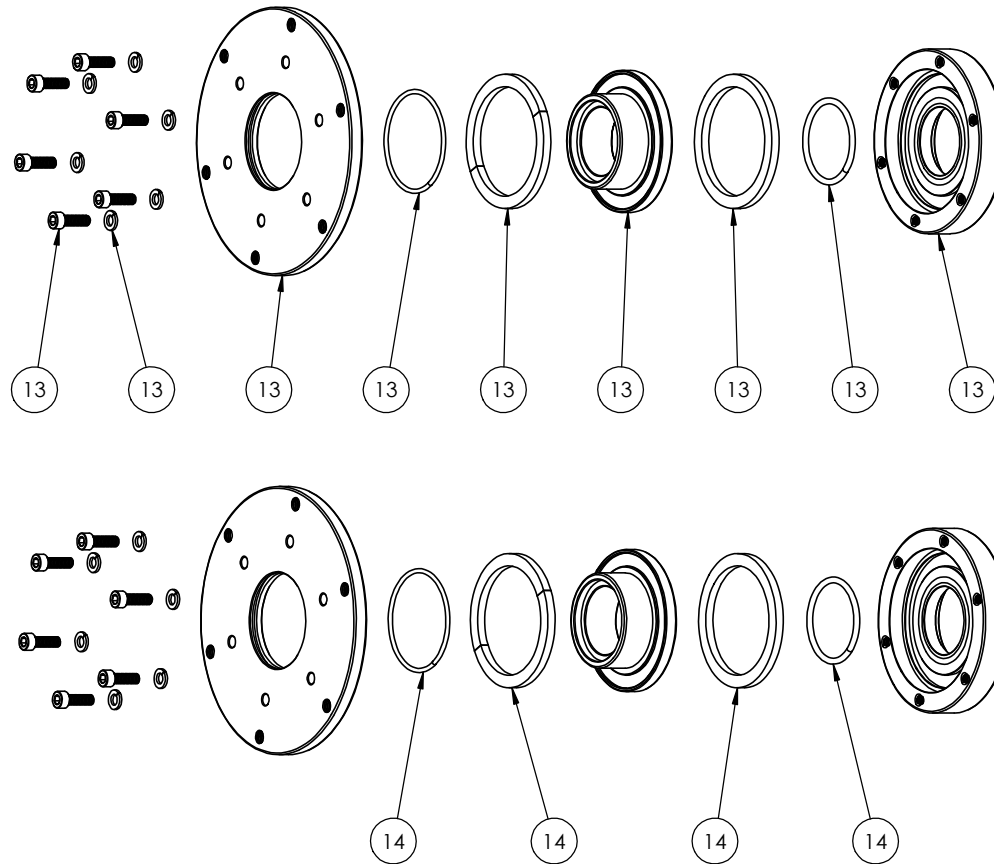



UNLESS OTHERWISE SPECIFIED DIMENSIONS ARE IN MILLIMETERS SURFACE FINISH: PAINT:			TOLERANCES UNLESS NOTED WHOLE DIMENSIONS ±0.50 ONE DECIMAL PLACE ±0.25 TWO DECIMAL PLACES ±0.10 ANGLES ±0.30°			DO NOT SCALE DRAWING		DEBURR AND BREAK SHARP EDGES	
							MAGNUM AUSTRALIA 35 PARKHURST DRIVE KNOXFIELD, VICTORIA 3180 PHONE 98018433		
	NAME	SIGNATURE	DATE	REVISION	TITLE:				
DRAWN	Alberto C		19/11/2020		WATER CANNON MM40-NK				
CHECKED	Rocky		19/11/2020						
APPROVED					DWG NO. MM40-NK				
			MATERIAL: N/A		A3				
			THICKNESS: N/A		SCALE: 1:5	SHEET 2 OF 5			



UNLESS OTHERWISE SPECIFIED DIMENSIONS ARE IN MILLIMETERS SURFACE FINISH: PAINT:			TOLERANCES UNLESS NOTED WHOLE DIMENSIONS ±0.50 ONE DECIMAL PLACE ±0.25 TWO DECIMAL PLACES ±0.10 ANGLES ±0.30°		DO NOT SCALE DRAWING	DEBURR AND BREAK SHARP EDGES
					 MAGNUM AUSTRALIA 35 PARKHURST DRIVE KNOXFIELD, VICTORIA 3180 PHONE 98018433	
	NAME	SIGNATURE	DATE	REVISION	TITLE: WATER CANNON MM40-NK	
DRAWN	Alberto C		19/11/2020			
CHECKED	Rocky		19/11/2020			
APPROVED					DWG NO. MM40-NK	
					MATERIAL: N/A	
					THICKNESS: N/A	
					SCALE: 1:4	SHEET 3 OF 5

8 7 6 5 4 3 2 1



UNLESS OTHERWISE SPECIFIED DIMENSIONS ARE IN MILLIMETERS SURFACE FINISH: PAINT:		TOLERANCES UNLESS NOTED WHOLE DIMENSIONS ±0.50 ONE DECIMAL PLACE ±0.25 TWO DECIMAL PLACES ±0.10 ANGLES ±0.30°		DO NOT SCALE DRAWING DEBURR AND BREAK SHARP EDGES	
				 MAGNUM AUSTRALIA 35 PARKHURST DRIVE KNOXFIELD, VICTORIA 3180 PHONE 98018433	
NAME	SIGNATURE	DATE	REVISION	TITLE:	
DRAWN Alberto C		19/11/2020		COMPLETE BEARING AND RECONDITIONING KIT FOR MM40-NK	
CHECKED Rocky		19/11/2020		DWG NO. MM40-4005	
APPROVED				A3	
MATERIAL:			SCALE: 1:3		
N/A			SHEET 4 OF 5		
THICKNESS: N/A					

8 7 6 5 4 3 2 1



Date: 1 December 2020

Revision:

Created: Alberto Ceron (Engineer)

Checked: Rocky Di Battista (Operations Manager)

Approved: Sean Haviland (Director)